

# Wacom®

## Cintiq Pro

### For professional artists and designers

An intuitive, pen-on-screen experience for your 2D and 3D digital creative customers. An excellent upgrade and add-on sales opportunity. Comes in 4 sizes: 13", 16", 24" and 32".

#### What is a Wacom Cintiq Pro pen display?

Wacom Cintiq Pro is an integrated pen and display that enables pro artists and designers to draw and edit directly on-screen. This combined pen-display is highly desirable by photographers, designers, artists, animators, game developers and video editors.



Featured products: Wacom Cintiq Pro 24 & 32  
Featured artist: David McLeod

### Live. Dare. Create.®

#### How do they work?

Cintiq Pro pen displays attach to Macs and PCs with a video connection just like any other computer display. In addition, they have USB connection that carries the pen position, touch, and pen-pressure and tilt information.

#### Why sell them?

Cintiq Pro presents an excellent upgrade and attachment opportunity for creative software applications from industry leaders such as Adobe®, Autodesk®, Corel® and Pixologic®. And every computer needs a display!

#### Reasons why serious photographers, designers and artists choose Cintiq Pro:

##### 1. Premium Experience

Cintiq Pros provide an ultra-precise, natural pen-on-screen creative experience while improving productivity.

##### 2. Extreme Comfort

The Cintiq Pro 24" and 32" provide a natural, intuitive workflow. The perfectly weighted wireless Pro Pen 2, the accessory stand with rotation and angle options, an edge to edge glass surface, and a wireless programmable Express Key remote.

##### 3. Enhanced Control

Creatives who are trained to use traditional pens, markers and brushes benefit from the precise control and fluency of using a pressure-sensitive pen directly on screen. This experience simply can't be found when working with a mouse.

##### 4. Professional Productivity

Cintiq Pro 24" and 32" users find speed and productivity benefits in their creative workflow by working directly on screen with Multi-Touch and Pen input, the programmable on screen macros and radial menu, and the programmable Express Key remote.

##### 5. Color accuracy

Your clients seeking a high end color accurate display will benefit from the Cintiq Pro 24 and 32 models with 4K displays and up to 99% Adobe RGB.

##### 6. All in One solution

The Cintiq Pro 24 and 32 can be combined with Wacom's new Cintiq Pro Engine (modular PC computer) as an All in One desktop pen based solution for digital creatives.

#### Sales Tips

1. Cintiqs can be used with Macs or PCs. The pen will work in any software application, while enhanced functionality can be had in applications that make use of the pen-pressure and tilt.
2. Sales involving computers for creative use, creative software and cameras should also include Wacom Cintiq Pro as a recommended add-on.
3. Customers using creative applications may have heard of Wacom or Intuos Pro. Just ask and recommend!

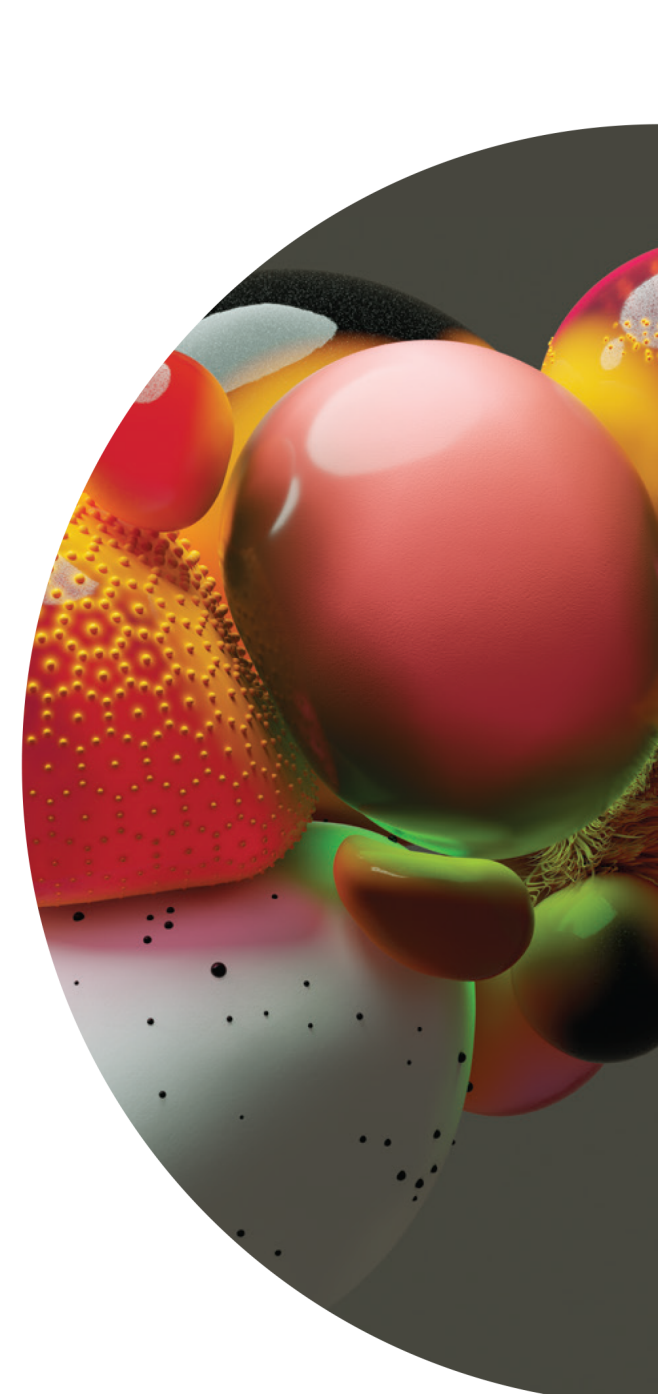
#### Probing Questions to Ask:

- Do you use creative applications from developers such as Adobe, Autodesk or Corel for your professional work or serious creative hobby?
- Are you familiar with pen displays and how they benefit the creative process?
- Do you already have an (older) Wacom pen tablet?
- Tell me about your work—do you do any photo editing, drawing, design, animation or illustration as part of your workflow?
- Would increasing control, comfort and productivity when working with your computer be of benefit?

#### Product Description and Use:

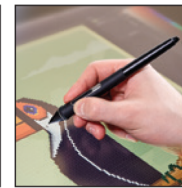
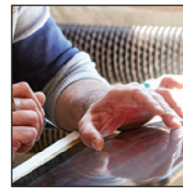
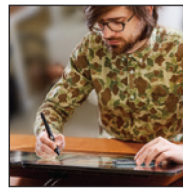
- The Cintiq Pro 24 comes in both a Pen only and a Pen and Touch version.
- The Cintiq Pro 32 has a single version which is both pen and touch.
- There is an optional ergo stand available that lets you raise, tilt and rotate the Cintiq Pro to find the most natural position for use.

Extensively used in the creation of popular movies, animations, games, automotive designs and other high-profile projects, as well as by photo enthusiasts and artists. Cintiq Pro represents the gold standard, pen-on-screen experience for creative professionals. With its premium pen, vibrant color-accurate display, and the intuitive nature of working directly on-screen, a Cintiq Pro delivers an experience similar to working with traditional media, but with all of the benefits that working digitally affords.



#### More Resources:

Refer to the Cintiq Pro "Fact Sheet" and "Battle Card" for additional product information.



## The Cintiq Pro That's Right for You

Model	Wacom Cintiq Pro 24	Wacom Cintiq Pro 32
Model Number	DTK2420 creative pen display & DTH2420 creative pen display touch	DTH3220 - creative pen display touch
Display Size / Resolution	23.6 in (59.94 cm) / 4K: Ultra HD (3840 x 2160)	31.5 in (80 cm) / 4K: Ultra HD (3840 x 2160)
Active Area	20.55 x 11.57 in (522 X 294 mm)	27.44 x 15.43 in (697 x 392 mm)
Size / Weight (without optional stand)	26.65 x 15.5 x 1.9 in (677 x 394 x 47 mm) / 15.43 lbs (7 kg)	33.62 x 19.92 x 2.1 in (854 x 506 x 53.25 mm) / 28.66 lbs (13 kg)
Color Performance	1.07 billion colors (10 bit), 99% Adobe RGB	1.07 billion colors (10 bit), 98% Adobe RGB
Aspect Ratio / Brightness	16:9 / 350 cd/m <sup>2</sup>	16:9 / 340 cd/m <sup>2</sup>
Contrast Ratio / Response Rate	1000:1 / 12 ms	1000:1 / 8 ms
Viewing Angle	176° (88°/88°) H, (88°/88°) V	
Industry Standard Pre-sets	6500° K whitepoint default	
Connectivity	4 x USB3 ports*, 1 x USB C port, 1 x HDMI2.0 port, 1 x DisplayPort, 2 USB-A Ports (one for ExpressKey Remote dongle), audio headset jack, built-in microphone	
Graphics Input	USB type C port (supporting DisplayPort Alternate Mode) or or DisplayPort or HDMI2.0 port (required for 3840 x 2160 resolution)	
Multi-Touch	Pan, zoom and rotate gestures available in most applications including Adobe® Photoshop® and Illustrator®. Available on Touch models only (DTH-2420 & DTH3220)	
Pen	Battery-free Pro Pen 2 with 2 customizable side switches and 8192 pressure levels in both pen tip and eraser (patented electromagnetic resonance method)	
Pen Tilt Recognition / Range	±60 levels / 60 degrees	
ExpressKey™ Remote / Productivity Boosters	17 customizable, application-specific ExpressKeys, Touch Ring, Rocker Ring/Home Button, Precision Mode, Display Toggle, Radial Menu and dedicated pan, scroll, zoom, brush size, time-saving on-screen settings, on-screen keypad and radial menu	
Security	Kensington® Lock Port (lock purchased separately)	
Ergonomics	Built-in stand (5° w/o legs or 20°w/ legs). Optional Wacom Ergo stand with rotation	
Compatibility / System Requirements	PC: Windows® 7 or later (latest service pack/build), Mac: OS X® 10.11 or later (latest update); USB-C port with DisplayPort Alternate Mode (UHD), or Mini DisplayPort/DisplayPort (UHD) and USB-A, or HDMI 2.0 (UHD) and USB-A; Internet access for driver download.	
What's Included	Wacom Cintiq Pro 24 or 32, Wacom Pro Pen 2 with 4-color pen ring set, ExpressKey™ Remote (with USB-A RF dongle and 30cm micro-USB to USB charger cable), Pen stand with 10 replacement nibs (6 standard, 4 felt) and nib removal tool, Pen holder, 180W AC adapter and 1.8m power cable, 1.5m USB-C to USB-C cable, 3m DisplayPort to DisplayPort cable, 3m HDMI2.0 to HDMI2.0 cable, 3m standard USB-A to USB-A cable, DisplayPort to Mini DisplayPort adapter, Quick Start Guide, Regulation sheet, cleaning cloth	
Additional Accessories	Wacom Ergo Stand, Wacom Cintiq Pro Engine (see details below), Wacom Color Manager, Wacom Pro Pen 3D, Wacom Keyboard, Replacement Wacom nibs (standard and flex) for Wacom Pro Pen 2, Additional previous generation pens (Classic, Airbrush, Art, Pro Pen), Replacement ExpressKey Remote, Replacement Wacom Pro Pen 2	
Limited Warranty	2 years in USA, Canada, and Latin America	

Specification numbers like display size, active area and weight are approximate and subject to change. \*When connected to host computer over USB-C (including Wacom Cintiq Pro Engine), Cintiq Pro USB 3.0 ports run at USB 2.0 speeds to accommodate 4K video bandwidth over USB-C.

Wacom Cintiq Pro Engine	Xeon model	i5 model
Model Number	DPMW1000H	DPMW1000L
Processor	Intel® Xeon® E3-1505M V6 (up to 4 GHz)	Intel® Core™ i5-7300HQ (up to 3.5 GHz)
Graphics Card	NVIDIA® Quadro® P3200 6GB GDDR5 RAM	NVIDIA® Quadro® P3200 6GB GDDR5 RAM
RAM / Expandable Memory	2 x 16GB DDR-2400 / Memory at maximum (32GB)	1 x 16GB DDR-2400 / Expandable to 32MB (max)
Storage / Expandable Storage	512GB SSD PCIe Gen3 (M.2 2280) / Upgradeable using any PCIe SSD in sizes M.2 2280 and M.2 22110	256GB SSD PCIe Gen3 (M.2 2280) / Upgradeable using any PCIe SSD in sizes M.2 2280 and M.2 22110
Operating System	Windows 10 Pro for Workstations	Windows 10 Pro
Size / Weight	8.54 x 17.51 x 1.16 in (217 x 445 x 29.5 mm) / 4.4 lbs (2 kg)	
Video Out / Other Connections	1x Mini DisplayPort (DP1.2, 4K 60Hz), 1x Mini HDMI (HDMI2.0, 4K 60Hz) / 1x LAN port(Gigabit), 1x DC Jack (for Wacom Cintiq Pro Engine), 1x DC Jack (for Wacom Cintiq Pro), 1x DC Jack (for Wacom Cintiq Pro docking)	
What's Included	Wacom Cintiq Pro Engine - Xeon or i5 model, AC power adapter, AC power cord, L-shaped screw driver, 2x screws to secure to Wacom Cintiq Pro 24/32, Quick Start Guide (QSG), Regulation Sheet. Internet access required to upgrade drivers.	
Limited Warranty	1 year in USA, Canada, and Latin America	